

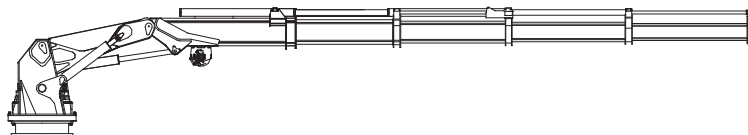


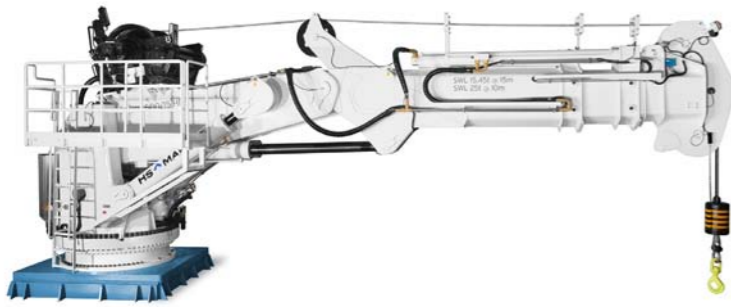
AKC CRANE RANGE

FOLDABLE KNUCKLE AND TELESCOPIC BOOM TYPE

HS  **MARINE**

the ultimate crane specialist





AKC SERIES

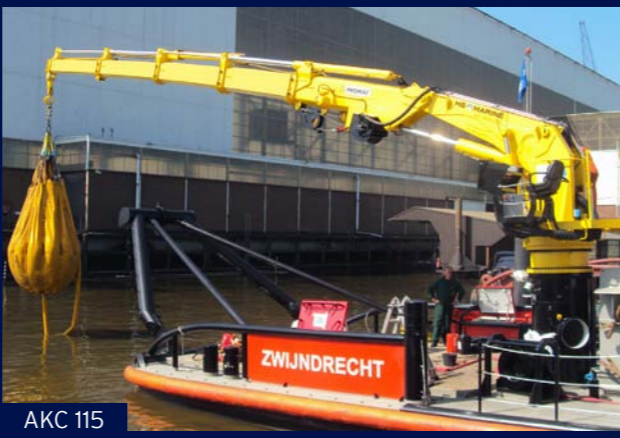
Foldable knuckle and telescopic boom type cranes of different standard capacities. Custom built for operation to specific sea state conditions.

| | | | | | | | |
|----------------------|---------|---------------|---------------|---------------|---------------|---------------|---------------|
| AKC 80 HE2 | kg m | 15315 4.00 | 10110 6.00 | 7440 7.88 | 5740 9.94 | | |
| AKC 80 LHE2 | kg m | 15180 4.00 | 9500 6.31 | 6780 8.48 | 5140 10.84 | | |
| AKC 80 HE3 | kg m | 14890 4.00 | 9710 6.07 | 7070 7.95 | 5420 9.97 | 4350 12.11 | |
| AKC 80 HE4 | kg m | 14620 4.00 | 9270 6.23 | 6730 8.12 | 5140 10.14 | 4120 12.22 | 3430 14.33 |
| AKC 80/15 HE4 | kg m | 14465 4.00 | 8940 6.38 | 6390 8.40 | 4830 10.55 | 3840 12.76 | 3180 15.00 |
| AKC 80/20 HE4 | kg m | | 7050 7.38 | 4420 10.40 | 3060 13.55 | 2300 16.76 | 1850 20.00 |
| AKC 100 E2 | kg m | 19240 4.00 | 12670 6.07 | 9880 7.61 | 7770 9.48 | | |
| AKC 100 LE2 | kg m | 19060 4.00 | 11955 6.37 | 9000 8.21 | 6940 10.38 | | |

| | | | | | | | |
|-------------------------|---------|---------------|---------------|---------------|----------------|---------------|---------------|
| AKC 100 E3 | kg m | 18930 4.00 | 11890 6.27 | 9200 7.81 | 7220 9.64 | 5810 11.71 | |
| AKC 100 E4 | kg m | 18230 4.00 | 11230 6.48 | 8670 8.03 | 6780 9.87 | 5500 11.90 | 4530 14.01 |
| AKC 100 LHE4 | kg m | 17850 4.00 | 10320 6.78 | 7660 8.63 | 5830 10.77 | 4620 13.10 | 3800 15.51 |
| AKC 100/18.5 HE4 | kg m | | 9070 7.38 | 6230 9.82 | 4480 12.56 | 3450 15.49 | 2790 18.50 |
| AKC 100/21 HE4 | kg m | | 7970 7.94 | 5080 10.94 | 3480 14.24 | 2580 17.73 | 2050 21.30 |
| AKC 115 HE2 | kg m | 22420 4.00 | 14770 6.07 | 11540 7.61 | 9080 9.48 | | |
| AKC 115 LHE2 | kg m | 22230 4.00 | 13950 6.37 | 10530 8.21 | 8130 10.38 | | |
| AKC 115 HE3 | kg m | 21750 4.00 | 13870 6.27 | 10780 7.81 | 8480 9.64 | 6830 11.71 | |
| AKC 115 HE4 | kg m | 21340 4.00 | 13160 6.48 | 10200 8.03 | 8000 9.87 | 6450 11.90 | 5370 14.01 |
| AKC 115 LHE4 | kg m | 20800 4.00 | 12240 6.78 | 9120 8.63 | 6970 10.76 | 5540 13.10 | 4570 15.51 |
| AKC 115/16.3 HE4 | kg m | | 11460 6.94 | 8350 8.95 | 6290 11.25 | 4950 13.74 | 4060 16.31 |
| AKC 145 HE2 | kg m | 27340 4.00 | 17030 6.42 | 13040 8.25 | 10140 10.20 | | |

| | | | | | | | | |
|-----------------------------------|---------|---------------|---------------|----------------|----------------|---------------|---------------|---------------|
| AKC 145/11 HE2 (12t Winch) | kg m | | 12000 7.00 | 7100* 11.00 | | | | |
| AKC 145 LHE2 | kg m | 27680 4.00 | 16120 6.72 | 12120 8.76 | 9370 11.10 | | | |
| AKC 145 HE3 | kg m | 26240 4.00 | 15850 6.62 | 12160 8.36 | 9540 10.36 | 7630 12.67 | | |
| AKC 145 HE4 | kg m | 25550 4.00 | 14720 6.94 | 11400 8.60 | 8880 10.59 | 7110 12.80 | 5930 15.07 | |
| AKC 145/20 HE4 | kg m | | 11815 7.95 | 8090 10.52 | 5750 13.52 | 4360 16.73 | 3520 20.00 | |
| AKC 145/21.5 HE4 | kg m | | 10880 8.25 | 7130 11.12 | 4910 14.42 | 3650 17.93 | 3000 21.50 | |
| AKC 145/23.5 HE4 | kg m | | 10980 8.19 | 7370 10.76 | 5070 13.76 | 3700 16.97 | 2880 20.24 | 2400 23.50 |
| AKC 185 HE2 | kg m | 34550 4.00 | 21530 6.42 | 16520 8.25 | 13170 10.20 | | | |
| AKC 185 LHE2 | kg m | 34300 4.00 | 20420 6.72 | 15390 8.75 | 11900 11.10 | | | |
| AKC 185 HE3 | kg m | 33460 4.00 | 20150 6.62 | 15510 8.36 | 12180 10.36 | 9750 12.67 | | |
| AKC 185 HE4 | kg m | 32540 4.00 | 18740 6.95 | 14590 8.60 | 11380 10.59 | 9140 12.80 | 7620 15.07 | |
| AKC 185 LHE4 | kg m | 32400 4.00 | 17640 7.35 | 13100 9.40 | 9910 11.79 | 7810 14.40 | 6440 17.07 | |

| | | | | | | | | | |
|-------------------------|---------|---------------|---------------|----------------|----------------|----------------|---------------|---------------|---------------|
| AKC 185/18.5 HE4 | kg m | 31500 4.00 | 16470 7.65 | 11860 9.92 | 8740 12.62 | 6780 15.53 | 5530 18.50 | | |
| AKC 185/20 HE4 | kg m | | 15720 7.85 | 10650 10.52 | 7660 13.52 | 5820 16.73 | 4700 20.00 | | |
| AKC 210 HE2 | kg m | 35132 4.50 | 22748 6.95 | 17560 8.80 | 13695 11.05 | | | | |
| AKC 210 LHE2 | kg m | 34780 4.50 | 21300 7.35 | 15950 9.50 | 12270 12.05 | | | | |
| AKC 210 HE3 | kg m | 34020 4.50 | 21170 7.23 | 16210 9.13 | 12550 11.35 | 10080 13.82 | | | |
| AKC 210/16 HE4 | kg m | | 20550 7.21 | 15420 9.14 | 11990 11.26 | 9620 13.60 | 8000 16.00 | | |
| AKC 220/17 HE4 | kg m | | 19015 7.61 | 14330 9.56 | 10930 11.89 | 8660 14.45 | 7200 17.00 | | |
| AKC 220/18 HE4 | kg m | | 18330 7.81 | 13470 9.96 | 10120 12.49 | 7940 15.25 | 6550 18.00 | | |
| AKC 220 LHE4 | kg m | | 17100 8.21 | 11970 10.76 | 8730 13.69 | 6730 16.85 | 5500 20.00 | | |
| AKC 220/22 HE4 | kg m | | 15840 8.61 | 10570 11.56 | 7620 14.89 | 5640 18.45 | 4550 22.00 | | |
| AKC 220/24 HE4 | kg m | | 14480 9.01 | 9210 12.36 | 6270 16.09 | 4660 20.05 | 3700 24.00 | | |
| AKC 220/27 HE6 | kg m | | 12860 8.42 | 8550 11.03 | 5960 13.83 | 4300 16.94 | 3270 20.11 | 2610 23.53 | 2200 27.00 |



OPTIONAL SOLUTIONS

HS.Marine offer a wide range of optional solutions for the cranes. We are always available to discuss the technical specifications in order to find solutions that makes our cranes ideally suited for our customers' special application.

Some of the most common options are:

Hoisting winches

Including various type of pulley block, boom head, counter weight, hydraulic limit switch, electrical limit switch, load read out on winch, passive heave compensation, AOPS, MOPS, emergency drum release

Personnel lifting according to EN13852

Centralized greasing system

Flame metallization surface treatment

Various operator control positions

Separate control console, integrated seat or stand console, control support on column, cabin, radio remote control, cable remote control, remote seat chair control

Boom mounted led lights

Power packs for deck installation or for underdeck installation

Stainless steel cylinder rods or ceramic coated rods

Nuts, bolts and plastic caps and plugs for crane installation

Advanced safety system

Including HS.Marine Multifunction Service Unit and DiaMonD service software; local and remote operator screen with visualization of load, moment, message, warning and alarms

Sea state selector

Acoustic and visual alarm

Interface with other customer's equipment and remote emergency stop in category 2

Load radius indicator

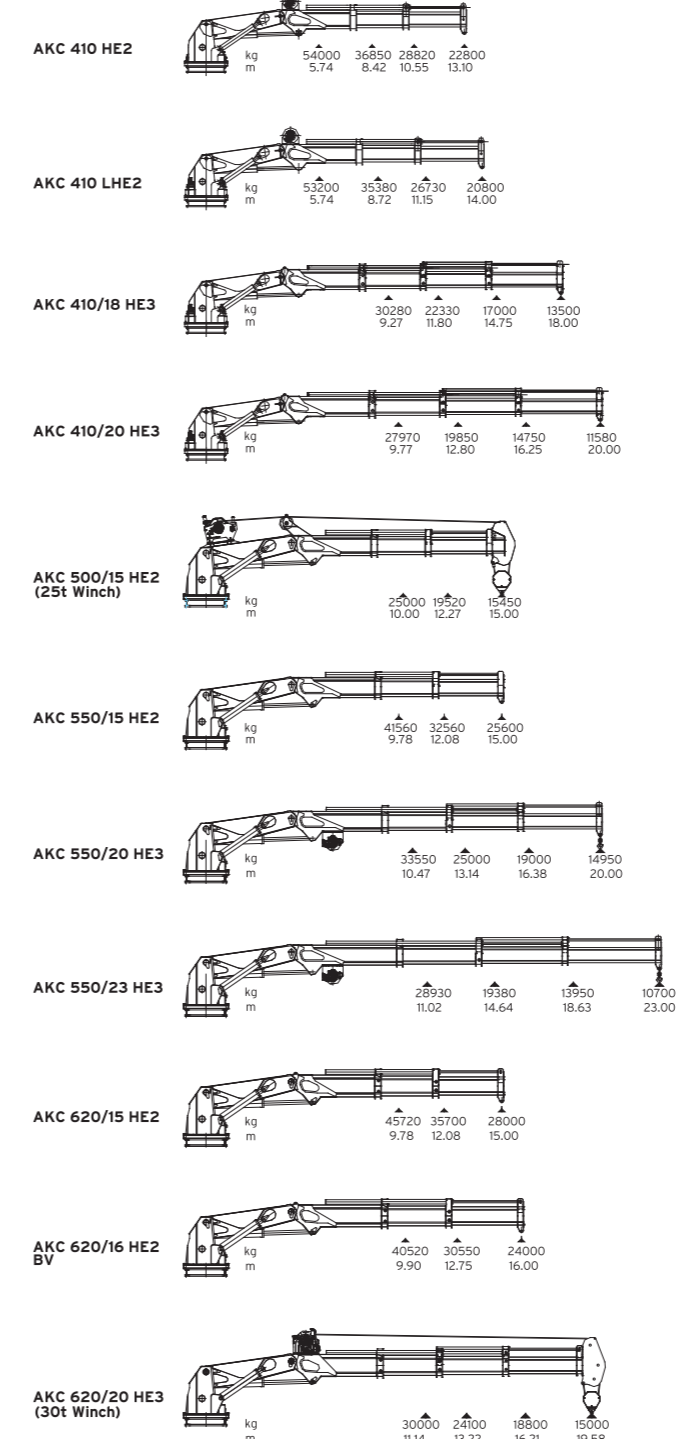
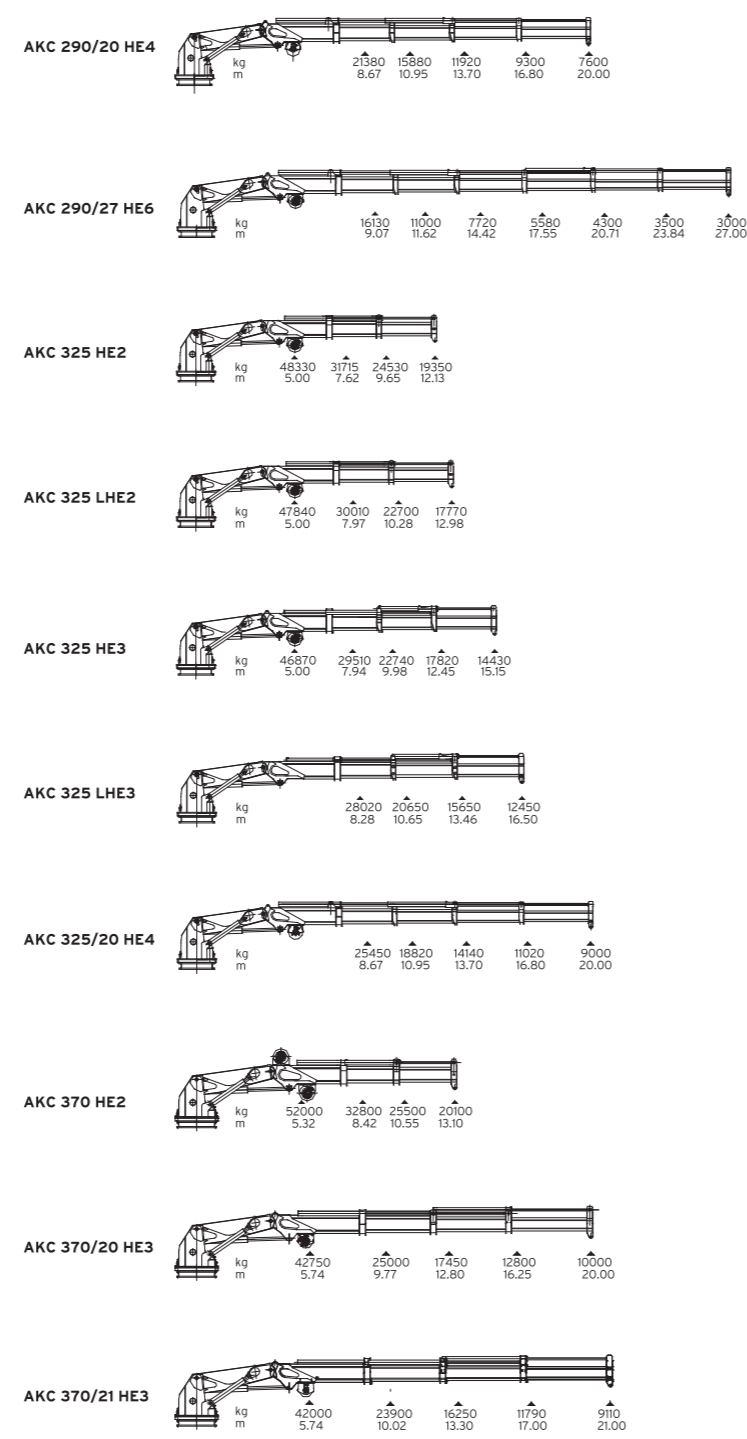
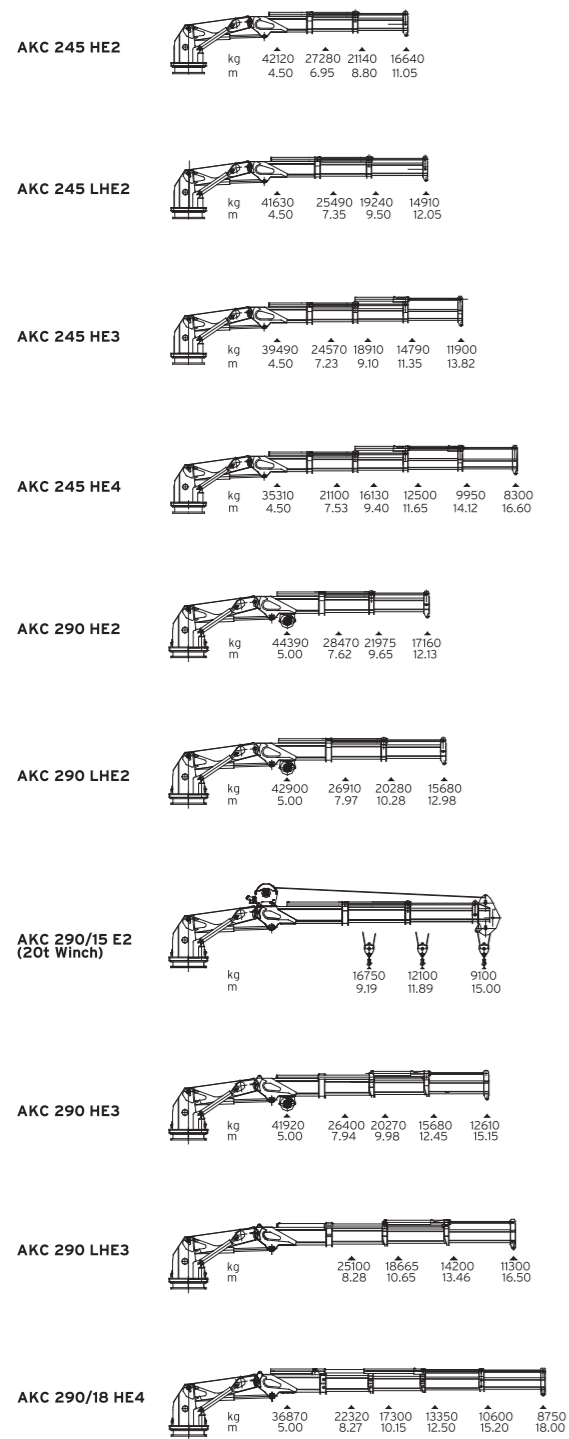
Design approval, inspection during fabrication, witness of FAT by classification society, crane certification

Extra elements on distributor block with hydraulic activation till boom end for additional equipment

Low design temperature

Crane color

Crane adaptor for installation on existing basements



AKC 245



AKC 290



AKC 370



AKC 410



AKC 500



AKC 620



QUALITY SOLUTIONS / QUALITY DETAILS

MARINE DESIGN

Our cranes design have been specially developed and improved for operation in marine environment. All structures have been designed to take up heavy lateral forces and to have a low value of elastic deflection during loading. All parts have been designed and protected for easy maintenance.

DESIGNED FOR LONG LIFE

Each crane components and each crane parts are selected and designed for long life. We totally understand what downtime means in marine business and the impact of service costs. Our goal is the reliability of the crane therefore we only use components or technical solutions of proven long lifespan.

CRANES WITHOUT LIMITATIONS

Our cranes can work in any configurations: no matter if the boom is fully vertical extended up or if it is knuckled downwards. The safe working load can be moved by any crane cylinders, including the telescopic ones.

EASY AND TESTED INSTALLATION

HS.Marine guarantees easy installation of all cranes. All the cranes connection points are properly prepared and clearly marked in order to make the installation as easy as possible. We always prepare the specific interface with customer's system and we test the crane with such interface before delivery.

LARGER PINS

In comparison to other cranes, the articulation points of our cranes are most likely bigger. We always calculate and design the cranes to withstand side loads. This results in larger pins.



POWERFUL ROTATION

All cranes are provide with a powerful rotation system that drive the crane perfectly even during height relevant angle of inclination. The rotation system is designed for shock load resistance. Gear boxes are a rarity as a spare for HS.Marine cranes.

EXCEPTIONAL STRENGTH AND LOW FLEXION

All structures have been designed to take up heavy lateral forces, to obtain a smooth transition between elastic and rigid point of construction and to have low value of flexion. All articulation points are especially dimensioned to be low stress; FMECA analysis are carried out for dimensioning.

CRANE DESIGN BASED ON RELIABILITY

We focus on quality solutions and quality of the components

CRANE BOOM TELESCOPIC SEQUENCE

As a befitting safety issue, we underline that the crane booms respects the telescopic sequence during extension out and retraction.



STAINLESS STEEL CONTROL POSITIONS

Control position are in stainless steel and has high protection from water spray.

HIGH ATTENTION TO DETAILS

For the best reliability and for easy maintenance.

SALT PROOF SEALING

We do our utmost to seal completely any exposed opening, such as the surface between two flanges, pins, plugs, umbraco bolts hearts, cylinder plugs, access holes for maintenance etc.

SURFACE TREATMENT GIVING A LONGER LIFE

Our design, our material and component selection, our excellent surface treatment and painting procedures and our salt proof sealing, all guarantee a strong barrier against corrosion.



DETAIL PROTECTION

All components are individually painted before assembling.

TAGGING

Cable, hose and components are tagged with the spare parts code.

FULLY TESTED

All our cranes are always load tested at the factory prior to delivering to our customers.

CUSTOMER SERVICE

None of our customer are left alone. We have a global service network. We care about our customers.

AS BUILT DOCUMENTATION

All provided documentation is as built, extensive and specially prepared for each individual crane. Each manual states the crane serial number and shows actual photographs taken of the crane and its many details.



HS MARINE

HS.Marine has a wide range of **foldable knuckle and telescopic boom cranes**, for low deck space occupation and very compact recovering.

All model can be heavily customized versions according to the customers' special applications.

All cranes have been designed and built from the ground up for marine use and are successfully utilized in the most critical application, demonstrating reliability.

HS.Marine cranes are designed and built to last.

Low and easy maintenance, reduced spare parts consumption, smaller crane down time and significantly longer time make HS.Marine the best value money can buy.

The marine environment demands equipment of the highest level of quality to ensure reliable and safe operations: HS.Marine cranes are able to satisfy these requirements.

Through experience, service commitment and global presence we provide the best cranes and life cycle support.

HS.MARINE THE QUALITY SOLUTION

HS.Marine range include stiff boom, telescopic boom, knuckle boom and knuckle telescopic boom cranes.



FOLDABLE KNUCKLE & TELESCOPIC



KNUCKLE & TELESCOPIC



KNUCKLE BOOM



TELESCOPIC BOOM



STIFF BOOM



HS.MARINE Srl
Via delle Querce, 1/3
46019 Viadana (MN)
ITALY

VAT No. IT02025300209
+39 0375 25 48 19
info@hsmarine.net
www.hsmarine.net

